

### Field of Application

The elbow tube strainer is used to filter solid matter and liquids in the food and drinks industry.



#### ATTENTION

To avoid danger and damage, the fitting must be used in accordance with the safety instructions and technical data contained in the operating instructions.

### Safety Instructions



#### DANGER

- Dismantling the valve or valve assemblies from the plant can cause injuries from fluids or gases flowing out. Dismantle the valve or valve assembly only when the plant has been rendered pressure-less and free of liquid and gas.

### Function

The elbow tube strainer is used to filter solid matter and liquids. When the liquid flows through the strainer in the direction of the arrow (page 2 Fig. 1), the solid matter is retained in the mesh bottom.

### Installation instructions

The installation position is without import. External forces due to the installation must always be avoided.

### Cleaning

The mesh bottom can be removed from the casing for cleaning (see Disassembly and Assembly).



#### NOTE

It is also possible to clean mesh bottoms, which do not have fine wire-cloth screen, by simply rinsing out the strainer in the opposite flow direction.

### Disassembly and assembly

#### Disassembly:

- Unscrew the nut (2).
- Remove the mesh bottom (5) from the housing (4).
- Dismantle the seal (3) and O-ring (6).
- Unscrew the Liner (1) from the mesh bottom (5).

#### Assembly:

- Thoroughly clean and slightly lubricate mounting areas and running surfaces.
- Assemble in reverse order.



#### Lubricants

EPDM; Viton®; k-flex  
NBR; HNBR; Silicone  
Thread

Klüber Paraliq GTE 703  
Klüber Paraliq GB 363  
Teflongrease Interflon

### Technical Data

<b>Model:</b>	Elbow tube strainer
<b>Mesh bottom:</b>	DN 25-65 Slotted hole screen 0,5x10mm DN 80-150 Slotted hole screen 0,75x10mm
<b>Valve size:</b>	DN 25 - 150
<b>Connection:</b>	Thread DIN11851
<b>Temperature:</b>	+95°C depending on the medium
<b>Operating pressure:</b>	DN25 - 100 = 10 bar DN125 = 6 bar DN150 = 4 bar

<b>Material:</b>	<b>in product contact</b>	<b>not in product contact</b>
<b>Stainless steel:</b>	1.4404 AISI316L 1.4301 AISI304	1.4301 AISI304
<b>Surfaces:</b>	RA 0,8µm	RA 2,5µm E-polished
<b>Seal:</b>	NBR	-

### Spare parts list

DN	Item. 1	Item. 2	Item. 3	Item. 4	Item. 5	Item. 6
	Liner AISI304 / AISI316L	Nut AISI304	Seal DIN11851 NBR	Housing AISI304 / AISI316L	Mesh bottom AISI304 / AISI316L	O-ring NBR
7018 025 000-041	7027 025 003-041	2003 050 000-021	2004 050 000-056	7027 025 001-041	7019 025 000-041	2304 036 030-055 ø36x3
7018 032 000-041	7027 040 003-041	2003 065 000-021	2004 065 000-056	7027 032 001-041	7019 032 000-041	2304 042 030-055 ø42x3
7018 040 000-041	7027 040 003-041	2003 065 000-021	2004 065 000-056	7027 040 001-041	7019 040 000-041	2304 042 030-055 ø42x3
7018 050 000-041	7027 050 003-041	2003 080 000-021	2004 080 000-056	7027 050 001-041	7019 050 000-041	2304 059 035-055 ø58x3,5
7018 065 000-041	7027 065 003-041	2003 100 000-021	2004 100 000-056	7027 065 001-041	7019 065 000-041	2304 070 035-055 ø70x3,5
7018 080 000-041	7027 080 003-041	2003 125 000-021	2004 125 000-056	7027 080 001-041	7019 080 000-041	2304 085 035-055 ø85x3,5
7018 100 000-041	7027 100 003-041	2003 150 000-021	2004 150 000-056	7027 100 001-041	7019 100 000-041	2304 108 030-055 ø108x3
7018 125 000-041 7018 125 000-021	7018 125 002-041 7018 125 002-021	2003 125 000-021	2004 125 000-056	7018 125 001-041 7018 125 001-021	7019 125 000-041 7019 125 000-021	-
7018 150 000-041 7018 150 000-021	7018 150 002-041 7018 150 002-021	2003 150 000-021	2004 150 000-056	7018 150 001-041 7018 150 001-021	7019 150 000-041 7019 150 000-021	-

Code Material: xxxx-xxx xxx-021 = 1.4301 (AISI301) E-polished  
xxxx-xxx xxx-041 = 1.4404 (AISI316L) E-polished

□ **Dimensions**

DN	a	b	c	d	L1	L2	L3	L4	L5
25	∅ 26	Rd 52 x 1/6"	∅ 54	61	374	327	384	407	430
32	∅ 32	Rd 58 x 1/6"	∅ 70	71	374	326	384	407	431
40	∅ 38	Rd 65 x 1/6"	∅ 70	72	374	316	384	407	431
50	∅ 50	Rd 78 x 1/6"	∅ 85	82	389	327	399	432	446
65	∅ 66	Rd 95 x 1/6"	∅ 104	97	419	345	428	455	477
80	∅ 81	Rd 110 x 1/4"	∅ 129	115	713	560	722	763	771
100	∅ 100	Rd 130 x 1/4"	∅ 154	136	684	560	695	740	745
125	∅ 125	Rd 160 x 1/4"	∅ 204	162	778	560	815	826	863
150	∅ 150	Rd 190 x 1/4"	∅ 204	165	882	620	922	934	973

Measures in mm

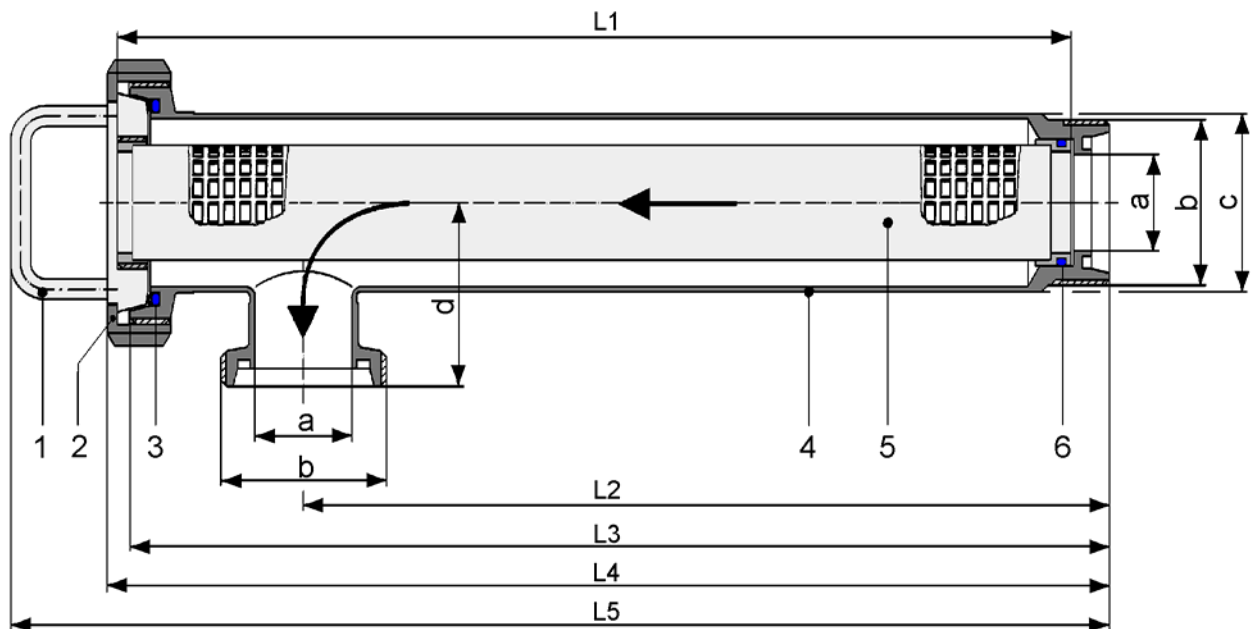


Fig. 1